

Potential for Phytotoxicity of Mogeton 25 WP
(Quinoclamine) on
Barberry (*Berberis thunbergii* 'Kobold')

By

Heiner Lieth, Director
Linda Dodge
Ron Lane
Dylan Hodgkiss

Project: Interregional Research Project #4
Project Number 24870A – August 24, 2005

Donors/Supporters:
Hines Horticulture, Vacaville, CA

UC Davis Environmental Horticulture IR4 Center
Department of Plant Sciences
University of California
One Shields Ave.
Davis, CA 95616
<http://envhort.ucdavis.edu/ir4>

PR.NO. :	24870
TRIAL:	1
DATE:	8/24/2005

IR-4 ORNAMENTAL DATA REPORTING FORM

Investigator (Name, Address, Phone#, e-mail, etc)	Dr. Heiner Lieth Department of Plant Sciences University of California One Shields Ave. Davis, CA 95616 Ph 530-752-7198 FAX 530-752-1819 Email: jhlieth@ucdavis.edu				
Location of Trial	UC Davis				
TRIAL TYPE: (field, container, greenhouse, etc)	Greenhouse containers				
Chemical - Common Name	Quinoclamine				
- Formulation	Wettable Powder 25%				
- Batch Number					
- Product	Mogeton				
- EPA Registration Number	CAS number 2797-51-5				
- Manufacture	Crompton				
USE INFORMATION					
- Plant Common Name	Barberry				
- Plant Scientific Name	<i>Berberis thunbergii</i> 'Kobold'				
- Pest (s) / Pathogen(s) / Weed(s)	Liverworts				
Soil Type or Type of Potting Mix:	% Sand	% Silt	% Clay	% OM	pH
UC Mix	35			65	6.5
Enter each DATE for:	Seeding:	Emergence:		Transplanting: 5/27/2005	
Enter each SPACING for:	Plant or Pot: 6 inches		Row: 6 inches		
Enter each SIZE for:	Pot: 6-inch		Plot: 45 feet ²		
Experimental Design:	Randomized Complete Block				
Number of Reps:	3 blocks X 3reps/block = 9 replicates total for each treatment				

PR.NO. :	24870
TRIAL:	1
DATE:	8/24/2005

IR-4 ORNAMENTAL DATA REPORTING FORM

APPLICATION PARAMETERS¹

Type of Application: (aerial, ground, foliar, drench, ppi, chemigation, broadcast, directed, etc)	Foliar spray
Number of Applications:	2, four weeks apart
Application Type:	Over the top
Nozzle Type/Size:	Manual spray bottles
Nozzle Pressure:	
Delivery Rate:	
Calibration Date(s):	

APPLICATION SUMMARY

APPLICATION DATE	RATES (a.i./100 gallons water) (Be sure to provide units)	Brief Description of Growth Stage (Dormant, New Growth Present, Bud, etc)
6/02/2005	0, 2, 4, 8 oz./gal	Vegetative, 5 days post-transplant
6/29/2005	0, 2, 4, 8 oz./gal	Vegetative, 4 weeks post-transplant

RAINFALL/IRRIGATION RECORDS: INCLUDE RAINFALL/IRRIGATION INFORMATION
(printouts, IR-4 forms, etc.)

The plants were watered daily during the 12-week experiment with half-strength Hoagland's solution using a drip irrigation system delivering 1 gallon per hour.

PR.NO. :	24870
TRIAL:	1
DATE:	8/24/2005

IR-4 ORNAMENTAL DATA REPORTING FORM

OTHER PESTICIDES, FERTILIZER, LIME AND ADJUVANTS USED:

PRODUCT	AMOUNT	DATE
Pylon	6 mL/4 gal	6/17/2005
Marathon II	4 oz/4 gal	6/17/2005

NARRATIVE SUMMARY OF METHODS AND RESULTS: (Use more pages if needed)

Materials and Methods

Plant Material and Culture. Young plants of *Berberis thunbergii* 'Kobold' were received from Hines Nursery April 7, 2005. These were transplanted into 6-inch pots containing UC Mix on May 27, 2005 and maintained in a greenhouse under natural day length for 5 days until the experiment began on June 2, 2005. For the experiment, the plants were transferred to a greenhouse under natural day length with day/night temperatures of 77°/67°F (25°/19°C) (Figure 1). The plants were watered daily during the 12-week experiment with half-strength Hoagland's solution using a drip irrigation system delivering 1 gallon per hour. Applications of pesticides as part of a normal pest management program were made as needed (see above).

Experimental Procedure. Thirty-six plants were randomly chosen and individually tagged for treatment with 0 (Control), 2 (1X), 4 (2X), or 8 (4X) oz./gal Mogeton with 9 replicates per treatment. These dosages were prescribed in IR4 Ornamental Protocol 05-004 dated 5/05 (Appendix A). The plants received the first foliar spray application on June 2, 2005 and the second application 4 weeks later on June 29, 2005. The plants were arranged in a randomized complete block design with 3 blocks and 3 treatment replicates per block. Phytotoxicity ratings and plant height and width measurements were taken at week 0, 1, 2, 4, 8, and 12. Visual phytotoxicity evaluations were based on a numerical rating scale ranging from 0 (no injury) to 10 (complete kill) (Table 1). Plant height (cm) was measured from the container soil surface to the top of the canopy.

Plant width (cm) was measured twice along perpendicular lines at the widest part of the plant, resulting in W_1 and W_2 . For each observation a canopy volume index was calculated so as to be able to determine if canopy volume was affected by the application of Mogeton. The calculation was made as $H*W_1*W_2$, where H is the height and W_1 and W_2 are two width measurements. The usefulness of this index is based on the fact that many of the models for such a volume calculation are of the form $a*H*W_1*W_2$. The constant "a" depends on the assumption of the shape of the canopy. Since analyses of variance are scale-independent, the conclusion will thus be for the volume of the plant canopy.

Statistical Analysis. The data were analyzed using Proc GLM of the Statistical Analysis System (SAS). The phytotoxicity and change in mean value from the starting plant height, width and volume index were analyzed for significant differences using t-tests.

Results

At the start of the trial, a number of the plants showed black spots on some of the lower leaves that caused the visual plant damage ratings to be between 1 and 2 (Tables 1 and 2, Figure 2, Appendix B). By the end of the first week after the initial spray application, the plants in the 2X and 4X treatments showed significant increases in phytotoxicity ratings above these levels. Symptoms on these plants included leaves with burned margins, necrotic leaves and leaf abscission (Figure 3). In subsequent weeks, the phytotoxicity index ratings dropped for the Control and 1X treatments as the plants grew and the leaf spot condition did not worsen. The phytotoxicity ratings for the plants in the 2X and 4X treatment groups also declined

PR.NO. :	24870
TRIAL:	1
DATE:	8/24/2005

IR-4 ORNAMENTAL DATA REPORTING FORM

over time as new growth lessened the impact of the initial spray injuries but remained significantly above the ratings for the control and 1X plants.

Over the 12 weeks of the trial all plants increased in height and width (Table 3, Figures 2 and 4, Appendix B). The mean height increases ranged from 5.5 cm in the Control treatment to 7.4 cm in the 1X treatment; these height increase differences were not, however, significant. In the same way, no significant differences were observed between treatments for the increase in average width or volume index over the 12 weeks (Table 3, Figures 2 and 4, Appendix B).

Discussion

The growth of *Berberis thunbergii* 'Kobold' plants was not affected by Mogeton over the 12 week trial.

While all the plants had blemishes at the start of the trial, the plants in the 4X treatment suffered from significant phytotoxicity above this already by week 1. They did grow out of this effect to some extent but even by week 12 there were still noticeable remnants manifested as necrotic and abscised leaves.

While the plants which received the 1X treatment recovered over the 12 weeks to an acceptable level of phytotoxicity, the plants in the 2X and 4X treatments were always of worse quality suggesting that growers need to use great caution when treating *Berberis* plants with Mogeton, and not use a higher concentration than the proposed labeled rate of 2 oz/gal.

GOOD RESEARCH PRACTICE STATEMENT:

I acknowledge that I have read and followed the IR-4 Research protocol and completed this trial following good agricultural practice, or reported any deviations (note any changes from authorized protocol in narrative).

SIGNATURE (PRINCIPAL INVESTIGATOR) _____

Date Completed:

PR.NO. :	24870
TRIAL:	1
DATE:	8/24/2005

IR-4 ORNAMENTAL DATA REPORTING FORM

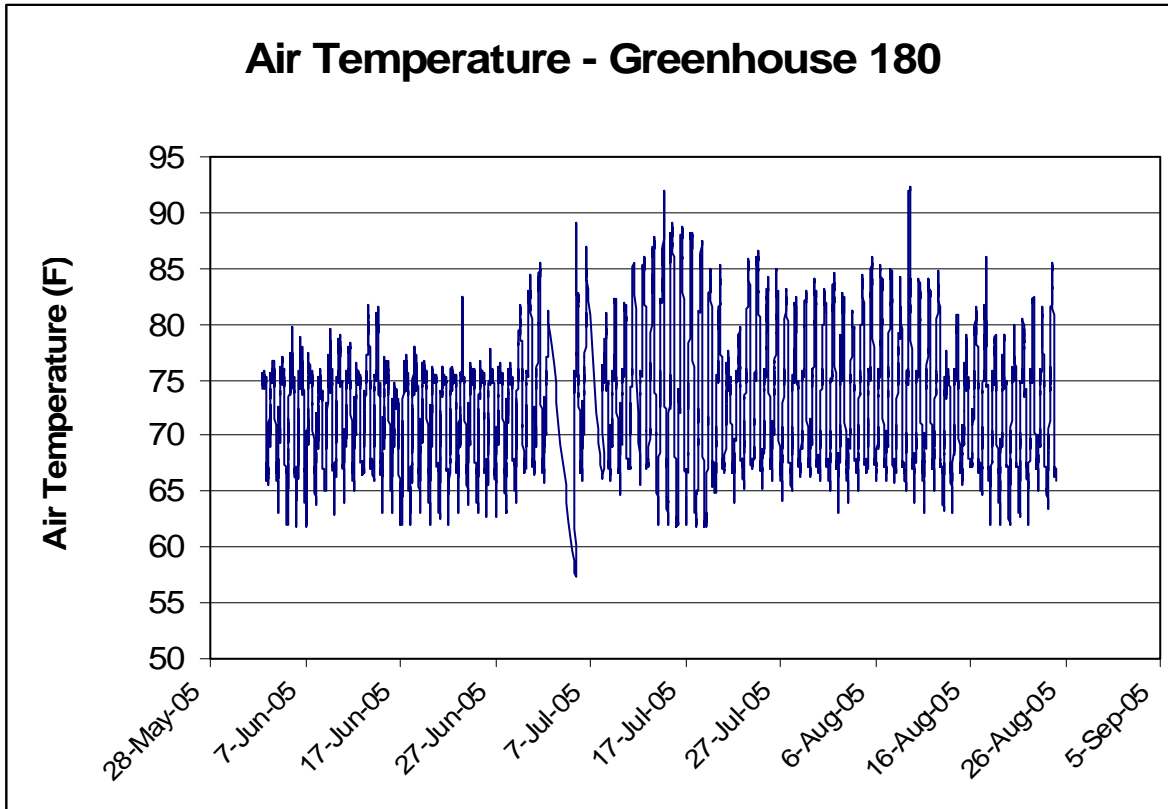


Figure 1. Greenhouse air temperatures during the experiment to evaluate the phytotoxicity of Mogeton on *Berberis thunbergii* 'Kobold'.

Table 1. Numerical plant damage rating scale used for phytotoxicity determinations.

Rating	Description of plant damage
0	No damage
1	No visible damage but unintended (non-permanent) impact
2	Slight leaf/tissue damage (curling leaves, necrosis, etc.)
3	Marginal chlorosis on some leaves (damage on up to 10% of plant)
4	10% – 20% of plant damaged
5	Significant damage to much of plant (30% - 40%)
6	40% – 60% of plant damaged
7	Chlorosis or necrosis on most of plant (60% - 70%)
8	Abscised leaves, branch dieback
9	Tissue severely damaged (80% - 100% of plant)
10	Complete kill

PR.NO. :	24870
TRIAL:	1
DATE:	8/24/2005

IR-4 ORNAMENTAL DATA REPORTING FORM

Table 2. Phytotoxicity ratings over 12 weeks for *Berberis thunbergii* 'Kobold' treated with 0 (Control), 2 (1X), 4 (2X), or 8 (4X) oz./gallon of Mogeton, applied at weeks 0 and 4. Different letters within a column indicate significant differences between treatments (P < 0.05). "Yes"/"No" refer to significant treatment effects at the 5% level. Means ± SE (n = 9)

Mogeton on Berberis
Phytotoxicity Increase at/after:

Treatment (oz/gal)	Week 1	yes	Week 2	yes	Week 4	yes	Week 8	at 10%	Week 12	yes
0	-0.22 ± 0.22	a	-1.33 ± 0.17	a	-1.67 ± 0.17	a	-1.89 ± 0.11	a	-1.78 ± 0.15	a
2 (1X)	0.56 ± 0.44	ab	-0.22 ± 0.66	a	-0.22 ± 0.55	b	-1.56 ± 0.34	a	-0.89 ± 0.26	b
4 (2X)	1.00 ± 0.29	bc	-0.33 ± 0.33	a	-0.11 ± 0.35	b	-0.56 ± 0.47	ab	0.11 ± 0.39	c
8 (4X)	1.78 ± 0.22	c	1.67 ± 0.17	b	1.44 ± 0.18	c	-1.11 ± 0.20	b	-0.22 ± 0.22	bc

Table 3. Plant height, width and volume changes over 12 weeks for *Berberis thunbergii* 'Kobold' treated with 0 (Control), 2 (1X), 4 (2X), or 8 (4X) oz./gallon of Mogeton, applied at weeks 0 and 4. Different letters within a column indicate significant differences between treatments (P < 0.05). "Yes"/"No" refer to significant treatment effects at the 5% level. Means ± SE (n = 9)

Treatment (oz/gal)	Height Increase after 12 weeks	no	Width Increase after 12 weeks:	no	Relative Volume Index Increase after 12 weeks	no
0	5.50 ± 1.09	a	24.33 ± 2.90	a	23853 ± 5136	a
2 (1X)	7.44 ± 1.97	a	24.56 ± 2.03	a	24539 ± 4176	a
4 (2X)	5.50 ± 1.09	a	21.44 ± 2.55	a	16492 ± 3999	a
8 (4X)	6.94 ± 0.95	a	25.19 ± 1.93	a	22078 ± 2140	a

PR.NO.	24870
TRIAL:	1
DATE:	8/24/2005

IR-4 ORNAMENTAL DATA REPORTING FORM

Species: *Berberis* -- Material: Mogeton

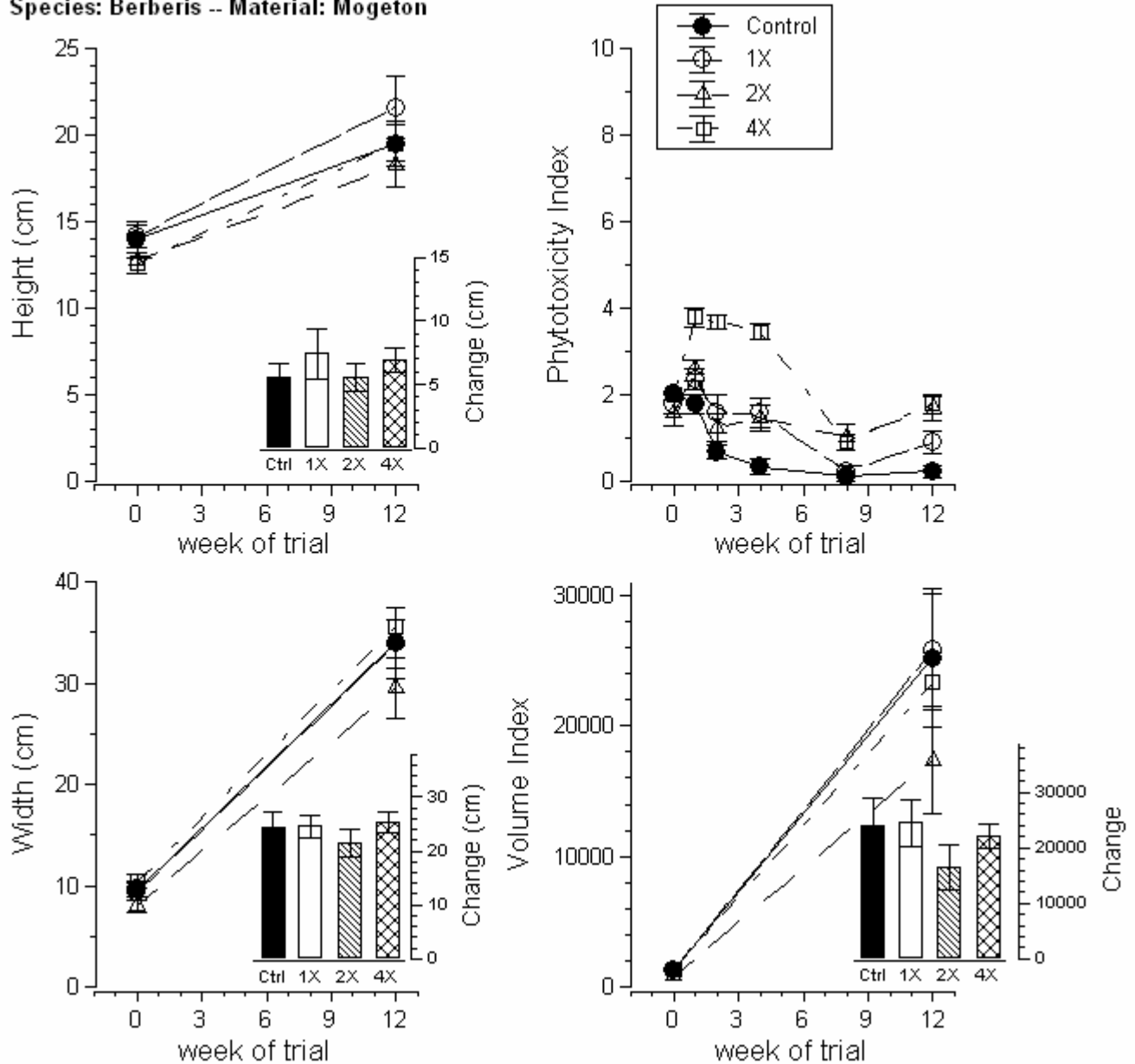


Figure 2. Summary of results for *Berberis thunbergii* 'Kobold' treated with 0 (Control), 2 (1X), 4 (2X), or 8 (4X) oz./gallon of Mogeton, applied at weeks 0 and 4. Both means and cumulative changes over time are plotted for phytotoxicity index, plant height, plant width and plant volume index. Histograms show changes over the 12-week trial period. SE bars shown. (n = 9)

PR.NO. :	24870
TRIAL:	1
DATE:	8/24/2005

IR-4 ORNAMENTAL DATA REPORTING FORM



Figure 3. Phytotoxicity symptoms seen on *Berberis thunbergii* 'Kobold' one week after the first foliar application of 8 oz./gallon (4X) of Mogeton. Symptoms included necrosis and abscission of leaves that came in direct contact with the product.

PR.NO. :	24870
TRIAL:	1
DATE:	8/24/2005

IR-4 ORNAMENTAL DATA REPORTING FORM



Block A



Block B



Block C

CONTROL

1X

2X

4X

Figure 4. *Berberis thunbergii* 'Kobold' plants 12 weeks after treatment with 0 (Control), 2 (1X), 4 (2X), or 8 (4X) oz./gallon of Mogeton, applied at weeks 0 and 4.

PR.NO. :	24870
TRIAL:	1
DATE:	8/24/2005

IR-4 ORNAMENTAL DATA REPORTING FORM

APPENDIX A

Phytotoxicity to herbaceous perennial plants with applications of Mogeton 25WP

Ornamental Protocol Number: 05-004

REVISED DATE: 05/05

Objective: Determine phytotoxicity of Mogeton 25WP to perennial plants commonly grown in greenhouse and/or nurseries.

Experimental Design:

Plot Size: Must be adequate to reflect actual use conditions.

Replicates: Minimum of 3 replications (preferably 4) with 3 pots per replicate

Application Instructions: Two applications made approximately 4 weeks apart. Plant materials must be established in containers and have broken dormancy prior to first application. Use 2 qts of final spray solution per 100 sq ft or about 218 gal per acre. Applications should be made over the top of the plants using application equipment consistent with conventional commercial equipment. Please see table below for instructions for post-application irrigation.

Plant Materials: See attached list of plant materials. Plants must be growing in containers and not field grown.

Evaluations: Record phytotoxicity on a scale of 0 to 10 (0 = No phytotoxicity; 10 = Complete kill) at 1, 2, 4, 8, and 12 weeks after initial application. If appropriate, also include ratings for chlorosis, defoliation, stunting or other growth effects on a scale of 0 to 10 (0 = No effect; 10 = Complete plant affected). If any phytotoxicity is observed in treated plants, take pictures comparing treated and untreated plant material.

Recordkeeping: Keep detailed records of weather conditions including temperature and precipitation, soil-type or soil-less media, application equipment, application volume per acre, irrigation, liner size, plant height & width, and plant growth stage at application and data collection dates.

Treatments:

Product	Rate	Post-Application Irrigation Instructions
Mogeton 25WP (quinoclamine)	2.0 oz/gal 4.0 oz/gal 8.0 oz/gal	Do not overhead water for 24 h after application.
Untreated	--	--

For labels, materials, and any required adjuvants contact:

Mogetan - Crompton, Kevin Donovan, 203-393-2163 x 2028, kevin.donovan@cromptoncorp.com

Reports:

Report must include a brief summary paragraph of results, a summary table with appropriate statistical analyses, a section on experimental design and materials and methods, with raw data and recordkeeping information as listed above included as appendices. If pictures were taken, please include them.

An electronic report is preferred but not required. If the report is provided electronically, the basic report can be sent in MS Word or WordPerfect, the recordkeeping information as pdf or other electronic documents, and the raw data in MS Excel or other suitable program such as ARM.

Please direct questions to: Cristi Palmer, IR-4 HQ, Rutgers University, 681 US Hwy 1 S, North Brunswick, NJ 08902-3390, Phone 732-932-9575 x629, palmer@aesop.rutgers.edu

OR

Ely Vea, 308 Aston Forest Lane, Crownsville, MD 21032, Phone & FAX#: 410-923-488, E-mail: evvea@comcast.net.

PR.NO. :	24870
TRIAL:	1
DATE:	8/24/2005

IR-4 ORNAMENTAL DATA REPORTING FORM

APPENDIX B

Phytotoxicity Report Form			Phytotoxicity at week						Plant Size at week 0			Plant Size at week 12		
Treatment	Block	Rep	0	1	2	4	8	12	Height (cm)	Width1 (cm)	Width 2 (cm)	Height (cm)	Width1 (cm)	Width 2 (cm)
Control	A	1	2	2	1	0	0	0	15	9	7	26	39.5	29.5
Control	A	2	2	2	1	0	0	0	18.5	14.5	8.5	23.5	38	31
Control	A	3	2	2	0	1	0	0	19	12	6	20	44.5	37
Control	B	1	2	0	0	1	1	0	12	12	6.5	16.5	27.5	22.5
Control	B	2	2	2	1	0	0	1	13	6	7	14.5	29.5	24
Control	B	3	2	2	1	1	0	0	15	14	10	20.5	42	35
Control	C	1	2	2	1	0	0	0	11.5	14	8	20.5	37.5	30.5
Control	C	2	2	2	1	0	0	0	9.5	8.5	4.5	14	19.5	16
Control	C	3	2	2	0	0	0	1	12	16	10.5	19.5	57.5	51
Mean			2.0	1.8	0.7	0.3	0.1	0.2	13.9	11.8	7.6	19.4	37.3	30.7
1X	A	1	2	2	1	1	0	1	15	10	6	17.5	34	22
1X	A	2	0	4	5	4	1	0	15	8	8	27	32	23
1X	A	3	2	2	2	1	0	0	14	7	5	18	31.5	24
1X	B	1	2	2	1	1	0	2	13.5	15	8	20.5	54.5	41
1X	B	2	2	2	1	1	0	1	16.5	11	7.5	21	46	31
1X	B	3	2	3	1	1	0	0	11.5	11.5	7	29.5	42	29
1X	C	1	2	2	1	1	0	2	14.5	10.5	7	13	32.5	19
1X	C	2	2	2	1	2	1	1	16	17.5	12.5	28	38.5	36
1X	C	3	2	2	1	2	0	1	11	8	9.5	19.5	38	37
Mean			1.8	2.3	1.6	1.6	0.2	0.9	14.1	10.9	7.8	21.6	38.8	29.1
2X	A	1	2	3	1	2	2	2	12	8	7	10.5	21	38
2X	A	2	0	2	1	1	1	1	15	12	8.5	18	13.5	25
2X	A	3	2	2	0	0	0	0	11	6.5	5	16	22	21
2X	B	1	2	2	1	1	1	2	13	7	7	20	29	22.5
2X	B	2	0	2	0	1	2	2	10	5	4.5	16	27	9
2X	B	3	2	3	2	2	0	2	15	10.5	10	24.5	39	38.5
2X	C	1	2	4	3	3	2	3	11	14	7	19.5	46	32
2X	C	2	2	3	2	2	1	1	11.5	8.5	13	18.5	45.5	36.5
2X	C	3	2	2	1	1	0	2	16	6	6	21	41.5	24.5
Mean			1.6	2.6	1.2	1.4	1.0	1.7	12.7	8.6	7.6	18.2	31.6	27.4
4X	A	1	2	4	4	4	2	2	14	12	8	22	37.5	26
4X	A	2	2	3	3	3	1	3	14	10.5	8	17	40	20.5
4X	A	3	2	3	3	3	0	2	9.5	5	9.5	18	35	34
4X	B	1	2	5	4	3	0	1	10.5	15.5	8	18	52.5	35
4X	B	2	2	4	4	4	1	2	11	9.5	15	18.5	38	21
4X	B	3	2	4	4	4	1	1	15	19	8	24	33	34
4X	C	1	2	4	4	4	1	2	13.5	11	10	17.5	46	31
4X	C	2	2	4	4	3	1	2	12.5	12	9.5	16	57	34
4X	C	3	2	3	3	3	1	1	13	10	7	24.5	46	20.5
Mean			2.0	3.8	3.7	3.4	0.9	1.8	12.6	11.6	9.2	19.5	42.8	28.4